

thethings.io

INDUSTRIAL
SERIES

Connected PLC



Connected PLC

Connected PLC is a gateway that lets you connect your existing industrial machinery to the Internet, and start monitoring it remotely using thethings.iO IoT platform.



Set Up in Minutes



UP TO 16 ISOLATED DIGITAL INPUTS
UP TO 4 ANALOG INPUTS



CONFIGURABLE AS PULSE COUNTER



MULTIPLE INTERFACE CAPABILITIES:
MODBUS TCP, RS-485 & 232, CAN, M2M, SIGFOX



EASILY INSTALLATION AND REMOTE CONFIGURATION

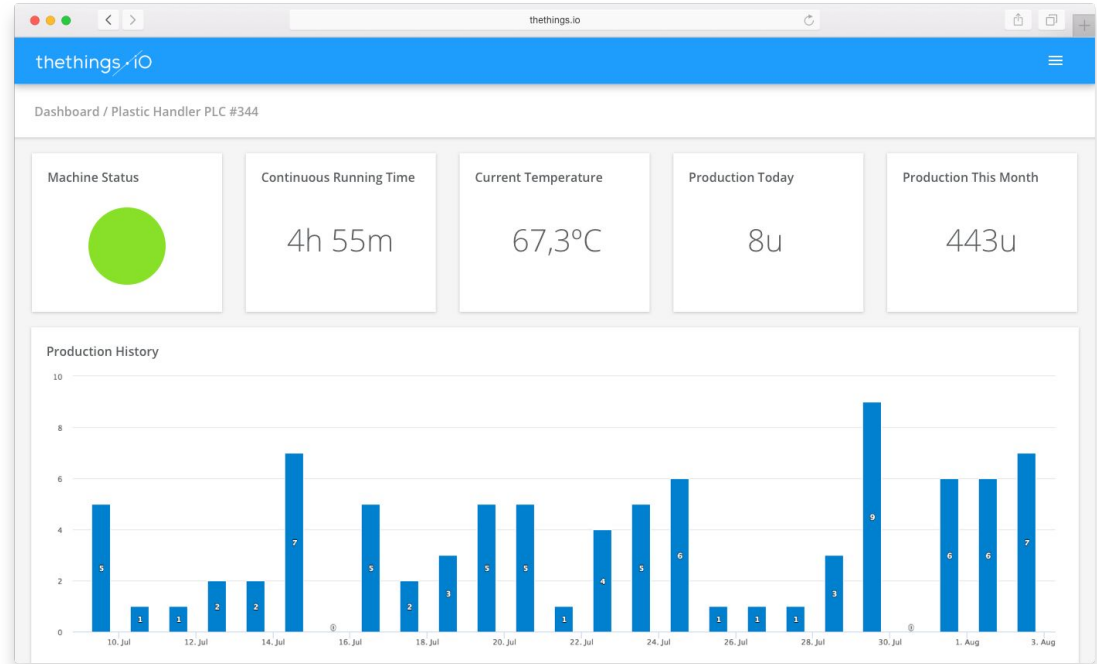


LIVE DASHBOARD



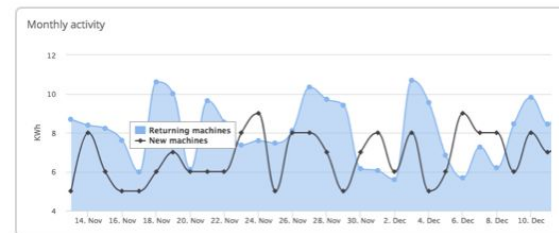
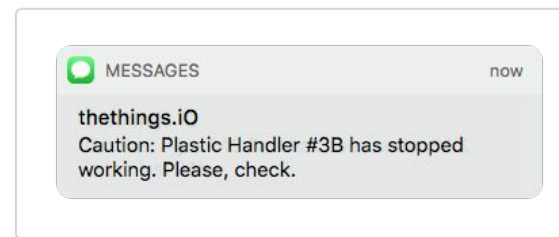
Live Dashboard

Every sensor is connected to a real-time dashboard that allows you to track real-time your assets. The dashboard is fast to set up and easy to use.



More features

You can connect custom widgets, reprogram the Modbus configuration of your Connected PLCs, set up live notifications (SMS, e-mails, chatbots) and apply AI and predictive algorithms on top of your real-time data.



Specs Overview

DATA INPUTS

UP TO 16 DIGITAL INPUTS

UP TO 4 ANALOG INPUTS

CONFIGURABLE AS PULSE
COUNTERS

INTERFACE CAPABILITIES

MODBUS TCP

RS-485

RS-232

CAN

CONNECTIVITY

ETHERNET

SIGFOX (OPTIONAL)

2G / 3G / 4G (OPTIONAL)

POWER

12 - 36V WIDE RANGE

VALID FOR ALL TYPE OF
INDUSTRIAL INSTALLATIONS
AND ENVIRONMENTS WITHOUT
MODIFYING THE DEVICE.

LESS THAN 200MA @ [12V-36V]
STANDARD SUPPORTED: 12V
AND 24V.

BACKUP BATTERY (OPTIONAL)

ENCLOSURE

STANDARD DIN

IP67 (OPTIONAL)

MULTIPLE SIZES AVAILABLE

CLOUD LICENSE

ANNUAL LICENSE INCLUDES
SUPPORT & FULL CLOUD
DASHBOARD ACCESS



Contacts

Quotation enquiries and
more informations



Marc Pous
CEO, thethings.io

marc@thethings.io

+34 936 816 891