

thethings.io

INDUSTRIAL
SERIES

Cold Chain Tracker



Cold Chain Tracker

thethings.iO Cold Chain Tracker is an easy to install sensor ready to work in severe environments. Just the sensor on whatever you want to track and start monitoring temperature.



Set Up in Minutes



TEMPERATURE, LIGHT AND HUMIDITY



INSTALL IT IN MINUTES



UP TO 2 YEARS LASTING BATTERY



SIGFOX CONNECTIVITY

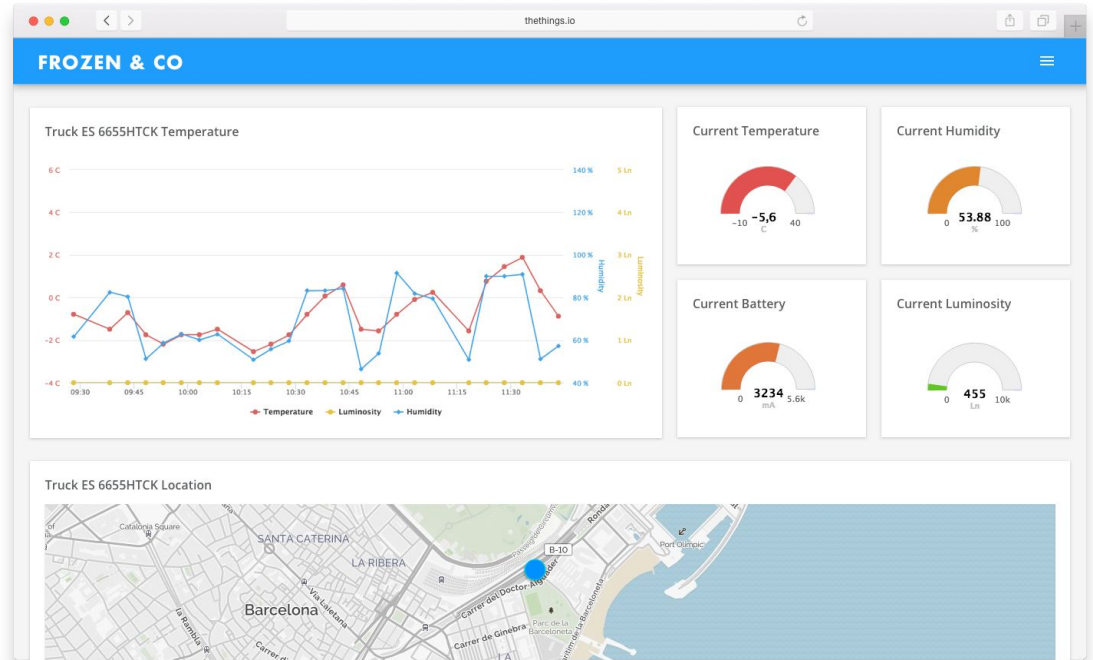


LIVE DASHBOARD



Live Dashboard


Every sensor is connected to a real-time dashboard that allows you to track real-time your trucks and installation temperature. The dashboard is fast to set up and easy to use.



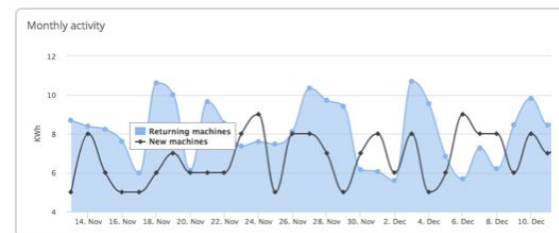
Other features

Every sensor is connected to a real-time dashboard that allows you to track real-time your trucks and installation temperature. The dashboard is fast to set up and easy to use.



 MESSAGES now

thethings.io
Caution: Truck FR44552 temperature has gone over 9,5°C. Please, check.



Specs Overview

DATA INPUTS

SIGFOX GEOLOCATION
WIFI GEOLOCATION (OPTIONAL)
GPS GEOLOCATION (OPTIONAL)
TEMPERATURE SENSOR
LIGHT SENSOR
HUMIDITY SENSOR

CONNECTIVITY

SIGFOX

POWER

2 AA BATTERIES
UP TO 2 YEARS LAST

ENCLOSURE

IP20, ABS ENCLOSURE
IP67 (OPTIONAL)
79 X 79 X 25 MM

CLOUD LICENSE

ANNUAL LICENSE INCLUDES
SUPPORT & FULL CLOUD
DASHBOARD ACCESS



Contacts

Quotation enquiries and
more informations



Marc Pous
CEO, thethings.io

marc@thethings.io

+34 936 816 891